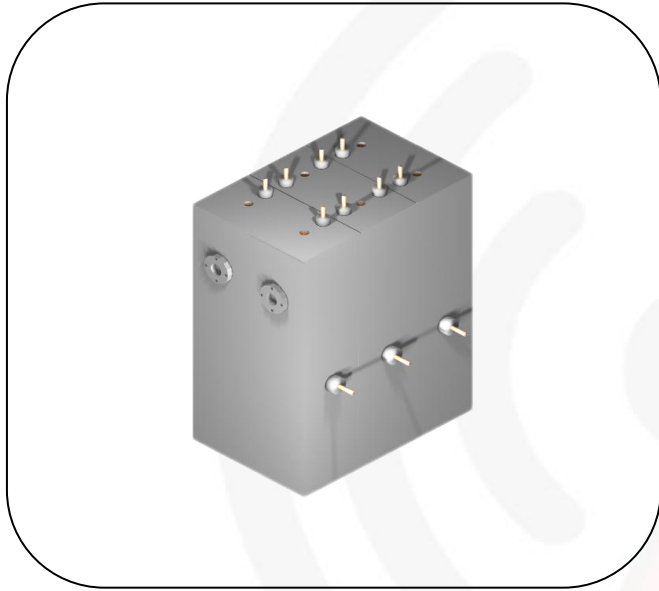


# VHF Mask Filter

## 6 KW Modules



- Band: VHF I & VHF III
- Cross Coupled
- High quality aluminum, brass, and copper materials.
- Digital or Analog Systems
- No finger stock used
- 6 MHz, 7 MHz, or 8 MHz Bandwidth

## SPECIFICATIONS

<i>Band</i>	VHF I & III	<i>Connections Available:</i>	EIA Flange
<i>Input Power Rating</i>	6 KW		
<i>Insertion Loss</i>	< 0.9 dB		
<i>Cooling Method</i>	Conventional or Forced		
<i>Rejection</i>	> 50 dB		
<i>Group Delay</i>	300 ns		

## STANDARD MODELS

<i>Model</i>	<i>Power Rating</i>	<i>6-Cavity</i>	
VHFI-6-M	6 KW	32" X 34" X 72"	350 lbs
VHFIII-6-M	6 KW	32" X 34" X 26"	300 lbs

*Operating Altitude*      Ratings are based on elevations up to 2800'. Derating begins after 2800'